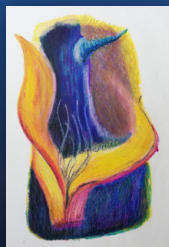


‘The Spirit of God has filled the universe with possibilities and, therefore, from the very heart of things, something new can always emerge.’

(Pope Francis, *Laudato Si'* #80)



‘May the wisdom that inspired our ancestors of old to align their lives with the Sun and rhythms of Earth enable us to experience the radiance of harmony and delight in the oneness of all life.’

- Nellie McLaughlin rsm

Left: *Out of Wonder*, Oonagh Campbell rsm

‘We, this people,  
on this small and  
drifting planet...’

- Maya Angelou. Read by Janna Levin

‘As we expand our identity as humans to embrace every other life form, each a unique manifestation of divine art, what will emerge? An overwhelming sense of the oneness of all life will transform us.’

- Nellie McLaughlin rsm

‘We know that God sustains the cosmos every moment of every day. We read in Lamentations (3:22-23), “The steadfast love of our God never ceases. God’s mercies never come to an end; they are new every morning.”’

- Elizabeth Davis rsm

‘What is too good for us to keep to ourselves?’

- Guiding Group

‘Mercy is the very heartbeat of God resonant in creation; the warmth that pulses through all things as the divine Mystery flows out into created form.’

(Cynthia Bourgeault)



The Helix or “Eye of God” Nebula: NASA, WIIYN, NOAO, ESA, Hubble Helix Nebula Team, M. Meixner (STScI), & T. A. Rector (NRAO).

‘Walking with people of faith seeking understanding and meaning today, as a catechist, I share in the creative work of God, leading people out of darkness into light, out of the slavery of literalism into the freedom of the daughters and sons of God, out of fear into wonder and awe.’

- Anne Walsh

‘a flaring forth  
one infinite moment  
timing delicate, precise  
holding all that is to come  
a journey, epic ... begun  
God’s self-revelation ... begun

encounters cataclysmic  
stars, galaxies, planets  
forming, re-forming  
expanding outward  
ever outward  
magnitude beyond imagining’

- Maree Hutchinson rsm

‘God has “mercified”  
the universe into  
being.’

(Ibn al- Arabi)

‘At the heart of the work of Mercy Global Action is a deep commitment to reflect on and understand the impact of our “worldview” on the way we respond to global injustice.’

- Angela Reed rsm

‘Resonance ~ Resistance ~ Resilience’

- Guiding Group (Judy Cannato)



# COSMOS/ COSMOLOGY

Voices, Quotes and Images from Theme 1, Segment 1: Global  
© 2020 Mercy International Association





*'Let us never desire more than enough.'*

(Catherine McAuley)

**'We respect. – We connect. – Together we are one.'**

- Uncle Max Dulumunmun Harrison



'The call for all of us globally to let go of any illusion that we human beings are separate from the planet'

- Angela Reed rsm

'We have to realize that a true ecological approach always becomes a social approach; it must integrate questions of justice in debates on the environment, so as to hear *both the cry of the earth and the cry of the poor.*'

(Laudato Si' #49)

'Living integral ecology through social and pastoral ministry, advocating for creation and human persons'

- Maryanne Kolkia rsm

'My own personal, intimate relationship with Earth – Where do my feet touch Earth in these days?'

- Elizabeth Davis rsm

**'Presence of a God who dances in creation'**

- Anne Curtis rsm

'Embrace an ecological conversion and grow into an "Enough Theology"'

- Mary Sullivan rsm

'How am I personally challenged in my care for Earth by Pope Francis, by the IPCC, by the Synod for the Amazon, by Greta Thunberg?'

- Guiding Group

**"Ko te whenua te toto o te tangata, Land is the life-blood of the people"**

Papatūānuku Mother Earth is the earth that we live upon. Not only is she the land we walk upon, she is also the life within the land. Everything is linked to the land...'

(Warren Pohatu)

'I have a passion for deepening my understanding of the interconnectedness of all creation'

- Tara Egger

'We tune our ears to the wisdom of Earth. It is deep prayer, this listening to her cries.'

(Bruce Sanguin)

'My relationship with God's creation is one of wonder, respect and comfort, and I never feel so alive as when I am interacting with the Earth.'

(Cate Kelly)

'Today Mercy is committed to preserving the integrity of creation, Papatūānuku – Mother Earth, seeing human beings as connected and dependent on all living species.'

- Margaret Milne rsm, Cheryl Connelly rsm, Teresa Anderson rsm

'Synod on the Amazon listening to indigenous voices everywhere'

- Guiding Group



*'God speaks to us through two books. One is the little book, the book of scripture. The other is the big book, the book of creation.'*

(John Scotus Eriugena)

Left: Getty Images/Andreas Solaro. Used under licence



# EARTH AND INTEGRAL ECOLOGY





‘We are the first group of humans to experience six generations of people living at the same time, each generation formed with different values.’

- Elizabeth Davis rsm

‘In the diversity of peoples who experience the gift of God, each in accordance with its own culture, the Church expresses her genuine catholicity and shows forth the “beauty of her varied face”’

(Joy of the Gospel #116)

‘Power of education to transform society.’

- Ailish O'Brien rsm



Image: istockphoto.com

‘The character of children can develop through the positive influence of a confident teacher whose behaviour can be emulated by the children and inspire them towards meaningful lives.’

(John Dau)

‘What are the important social markers for me of this age in which we live?’

- Guiding Group

‘Worldwide movement (The Shift) to provide a platform to unite and amplify support for the right to housing, to change the conversation, and to encourage government engagement and action.’

- Angela Reed rsm



‘The open space in the painting, for me, is the doorway in which all can continue to enter, be informed and experience transformational emergence.’

- Mary White rsm (artwork: ‘Si’ by Mary White rsm)

Agency ~ Access ~ Action

- Julia Upton rsm

‘Ministry of “courteous presence”: in scenes of wretched poverty, Catherine saw only the person.’

- Susan Browne rsm

‘The Aboriginal word, *Dadirri*, a process of deep and respectful listening to build community.’

- Carmel McDonough rsm

‘Bring forth the city of God.’

(Marty Haugen)

‘In what ways can I continue to help shape a world which responds to “the cry of Earth and the cry of the Poor”?’

- Guiding Group



MERCY  
GLOBAL  
PRESENCE

# PEOPLE AND DEEP SOCIAL CHANGE

Voices, Quotes and Images from Theme 3, Segment 1: Global  
© 2020 Mercy International Association





“Deep incarnation” is a new theological expression, the coming-into-flesh of God's eternal Word – not only human flesh but flesh that is the life in all creation.’

-Elizabeth Davis rsm

‘We good women, women of Mercy, are invited to be midwives of the birth of our God in our community living, in our ministry, in our advocacy for women and children, in our care for Earth.’

-Elizabeth Marrie rsm

‘While the invitation to ‘go out into the deep’ helps us to expand our consciousness of the evolving cosmos and its creator, there is also a sense in which we have “come from the deep”. We are intimately connected to “the deep”.’

-Elizabeth Dowling rsm

‘We do need to be scrupulous about the “throw away” mentality/ culture in our concern for Mother Earth, our common home, as part of the cosmos where God Incarnate in the person of Jesus dwells, especially among the least of our brethren. Enough is just what we need.’

-Margaret Mary Alamban rsm

‘As people of Mercy and people of faith, we are challenged to both cry out against oppressive systems and to contemplate the Cosmic Christ who dwells amongst us and fills us with hope.’

-Angela Reed rsm



The Compassionate Heart of the Cosmos, Corlita Bonnarens rsm

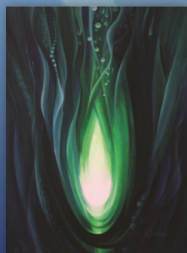
‘How do I now understand God's intimate presence in all creation?’

-Guiding Group

‘An incarnational worldview is the only way we can reconcile our inner worlds with the outer one, unity with diversity, physical with spiritual, individual with corporate and divine with human.’

(Richard Rohr)

The Nativity, Mary Clare Augustine Moore rsm © MIA



‘The radical divine reach in Christ through human flesh comes all the way down into the living web of organic life.’

(Elizabeth Johnson)

Left: Into the Deep, © Mary Southard csj

‘May you open ever more deeply to Incarnate God in Cosmos and indeed to Incarnate God's Presence in all beings! May Mercy flow to you from our brothers and sisters in the kindom!’

- Mary Pendergast rsm

‘We carry within us the precious gold of life, the sacred fragrance of God, the healing salve of love. Let us live it together.’

(John Philip Newell)



MERCY  
GLOBAL  
PRESENCE

# INCARNATE GOD IN COSMOS AND IN PERSON OF JESUS

